



karter.

SIGNATURE ROOMS

Where Elegance
Meets Technology

contents.

Intro	3
Karter Signature Table	4
Karter 4 Seater Signature Table	6
Karter 6 Seater Signature Table	8
Karter Huddle Chair	10
Karter Synergy Mobile Stand	11
Karter Signature Bar Cart	12
Karter Perch Stool	13
Karter Felt Large Basket	14
Karter Felt Caddy	14
Felt Desk Mat	15
Felt Coasters	15
Karter Collaborations	16-19



What is a Karter Signature Room?

A Karter “Signature Room” is a meticulously designed and specialised space within an organisation, aimed at delivering exceptional experiences during vital meetings, presentations, or events. The term “Signature” implies distinctiveness, setting these rooms apart from standard meeting areas.

Key characteristics include cutting-edge technology including advanced audiovisual equipment, spacious layouts accommodating larger groups, ergonomic seating for comfort and flexible configurations tailored to specific meeting needs. Typically located in prime areas, these rooms are reserved for crucial gatherings where impressiveness and productivity are paramount.

The Karter team of passionate designers share a deep appreciation for interiors and exceptional design, and we have brought this passion to life through our innovative creations.

Karter was born out of a sincere desire to enhance the aesthetics of technology and large displays, ensuring they seamlessly blend with modern interiors.

-Therese Hall



kar
ter.



karter.

SIGNATURE TABLE

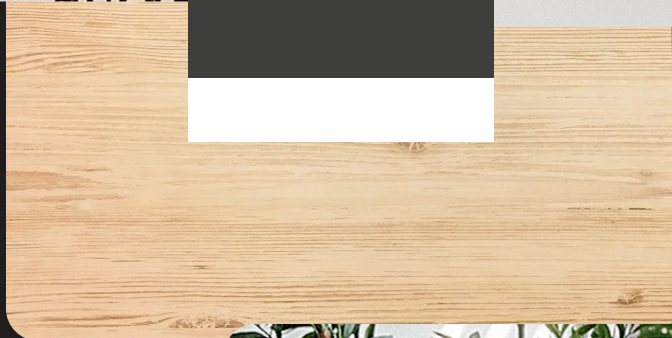
Introducing the Karter Signature Table, an original and innovative design to enhance the Microsoft Signature Teams Rooms Front Row feature.

Exemplifying originality, the Signature Table is a tactile masterpiece including 'Synergy' dual oak and black legs, paired with a refined grey acoustic felt modesty panel. Comprising three distinct table top parts – two gracefully curved ends and a centre segment – it allows flexible arrangements. Use all three sections for 6-8 people or just two for a cosy 4-6 seating. Additionally, each part features a pop-up unit for easy access to power, data, and charging, alongside smart cable management. A true embodiment of adaptability and craftsmanship, the Signature Table harmoniously merges aesthetics and functionality.

karter.com.au



karter. mood board



Elevate Your Interiors with the Karter Moodboard

The Karter Moodboard, a design masterpiece, is your key to achieving elegance and adaptability in interior spaces. It's a thoughtful selection of colours, finishes, and textures that guides material choices and inspires exceptional meeting room interiors.





karter.

4 SEATER SIGNATURE TABLE CONFIGURATION

TABLE DIMENSIONS 4 PERSON

2557.4 x (L) x 1376.6
(D) x 700 (H) mm

FEATURES

Utilises 2x
multi-function power
pop-ups, acoustic felt
modesty panel, cable
management.

SKU : KST

karter.

6 SEATER SIGNATURE TABLE CONFIGURATION

TABLE DIMENSIONS 6 PERSON

4157.4 (L) x 1376.6 (D)
x 700 (H) mm

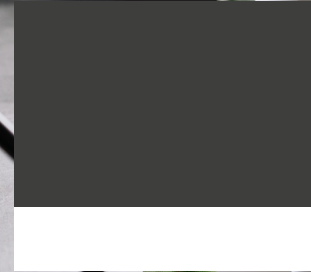
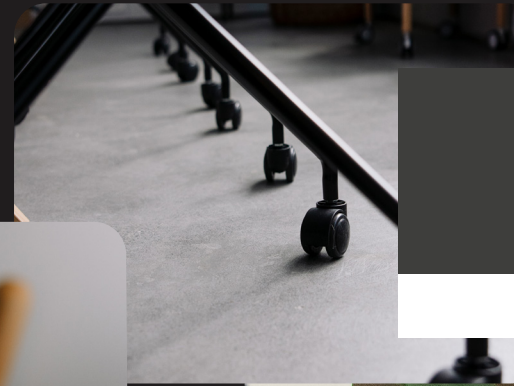
FEATURES

Utilises 3x
multi-function power
pop-ups, acoustic felt
modesty panel, cable
management.

SKU : KST



karter. mood board



karter.

HUDDLE CHAIR

SKU : KCHWG

PRODUCT DIMENSIONS:

(W) 579.86 x (D) 487.73 x
(H) back 818.08 (H) seat
459.66 mm

PRODUCT WEIGHT: 14.5kg

PACKED WEIGHT: 31.9kg

RATED LOAD: 150kg

MOBILITY: 4 Castors

FINISH & CONSTRUCTION: PP seat with upholstered grey fabric, powder-coated iron legs, castors

The Karter Huddle Chair is the perfect all-purpose meeting chair that has been carefully designed to suit most room fit-outs.

Karter furniture design aesthetic has been incorporated by blending finishes including white, grey and black. With it's elegant slimline curved seat, softened with light grey upholstery and stylish black legs the Huddle Chair is the ideal collaboration seating choice. Swivel on 4 castors rather than the seat so that these chairs always look neat and photo-worthy in any setting.

Pair with the Signature Table for the ultimate meeting room set-up.



karter.

SYNERGY MOBILE STAND

SKU : KMSS-OB

PRODUCT DIMENSIONS:

1230 (W) x 740 (D) x
1750 (H) mm

PRODUCT WEIGHT: 19kg

PACKED WEIGHT: 23.8kg

VESA: Horizontal up to 1000mm, Vertical 200~600 mm

SCREEN & LOAD CAPACITY: 55" ~ 105" OR UP TO 100KG

MOBILITY: 3" heavy-duty locking hubless castors, Adjustable fixed height

FINISH & CONSTRUCTION: Black Powdercoat Steel, American Oak Finish Steel

Introducing the Karter Synergy Mobile Stand, an original and innovative design

The Synergy is a stunning combination of black and American oak steel that provides the perfect synergy between your touchscreen and stand. Crafted with precision and attention to detail, this stand is designed to be both functional and visually appealing.

With its sturdy construction the Synergy is highly versatile and can fit screens from 55" up to 105".



karter.

SIGNATURE BAR CART

SKU : KSBC2-WH
KSBC2-BK

PRODUCT DIMENSIONS:
(L) 505 X (W) 365 X (H) 565 MM

PRODUCT WEIGHT: 3.55kg

PACKED WEIGHT: 4.2kg

RATED LOAD: 30kg

MOBILITY: 4x Lockable Castors

FINISH & CONSTRUCTION:

ABS Plastic shelves (Black or White), beech legs, lockable castors



Introducing the Karter Signature Bar Cart – a versatile and chic mobile unit designed to effortlessly store and showcase essential equipment and room décor.

Embodying Karter's distinctive fusion of textures and finishes, this cart boasts robust black or white plastic shelves complemented by elegant beech timber accents. With its lightweight construction, easy assembly, and lockable castors, this cart serves as the ideal enhancement for meeting areas, classrooms, or even your home.

Pair with the Signature Table for the ultimate meeting room set-up.



karter.

PERCH STOOL

SKU : KCHPS-WH
KCHPS-BK

PRODUCT DIMENSIONS:
(W) 500 X (D) 425 X (H) 820 MM

PRODUCT WEIGHT: 3.95kg

PACKED WEIGHT: 18.3kg

RATED LOAD: 120kg

FINISH & CONSTRUCTION:
PP Black or White, no assembly required

Elevate Your Meeting Space with the Karter Perch Stool

The Karter Perch Stool is a game-changer for your meeting area, thoughtfully designed to epitomise relaxation and collaboration. Crafted with precision, its lightweight frame effortlessly encourages a seamless shift between sitting and standing, fostering dynamic engagement.

But that's not all. The Perch Stool's ingenious design allows you to stack up to four stools together, ensuring your meeting room stays tidy and organised. At Karter, we champion the concept of "Grand-Standing" in meetings, enabling participants to stay visible above desk-seated colleagues. Pair the Perch Stool with high tables for the ultimate meeting experience.

Discover a new era of versatile seating with the Karter Perch Stool – where comfort, flexibility, and efficiency converge to redefine your meeting space. Available in the Signature Karter colours of black and white.





karter.

FELT BASKET

DIMENSIONS : (W) 390 X (D) 285 X
(H) 165 MM

The Karter Felt Basket, fashioned from sturdy polymer composite two-tone grey felt, serves as a stylish and practical storage solution. It features cut-out carry-holes for easy transport and pull-out shelf access. Its perfectly proportioned size fits A4 notebooks and documents, plus other miscellaneous items to be stored or taken on the go. This designer solution adds elegance and functionality to meeting rooms, classrooms or even at home, so you can de-clutter in style.



karter.

FELT CADDY

DIMENSIONS : (W) 145 X (D) 144.8
X (H) 230 MM

The Karter Felt Caddy, fashioned from elegant two-tone grey felt, serves as a chic and practical storage companion. It features a convenient hole for easy transport and hanging, making it ideal for keeping pens, erasers, cables, and miscellaneous items within arm's reach. Designed to be hung using hooks, such as magnetic, the Felt Caddy can be attached to interactive displays, magnetic whiteboards, or mobile workstations. This designer solution adds style and functionality to meeting rooms and classrooms, making organisation effortlessly elegant.



FELT DESK MAT

DIMENSIONS : 90 X 30CM

Streamline your workspace and add some style and luxe with the Felt Desk Mat. This generously proportioned desk mat is designed to protect your desk from scuffs and stains and conveniently doubles as an integrated mouse pad. Durable wool felt is soft to the touch, and a super-grippy non-slip backing prevents the mat from sliding around your desk.



FELT COASTERS

DIMENSIONS : 10CM DIAMETER

These Felt Coasters will soften even the hardest minimalist hearts. Durable, soft, easy-to-clean wool felt protects your surfaces from heat damage, absorbs cold water condensation while keeping you (and your table) looking effortlessly scandi-cool.



Great for desks and boardroom tables and at home too!

Each set contains 8 x felt coasters nesting in a matching felt holder.



karter. COLLABORATIONS

In addition to aesthetic design, a Karter Signature Room should also incorporate audiovisual equipment, including high-quality displays, video conferencing systems, and sound systems to facilitate effective communication and presentations for in-person and remote participants.

At Karter we understand the importance of collaborations and full room solutions, here are a few of our top recommendations:

SIGNATURE MICROSOFT TEAMS ROOMS

Improves the hybrid meeting experience for all attendees, no matter where they are meeting from.

21:9 FORMAT DISPLAYS

INTERACTIVE

For the ultimate flexible collaboration a large interactive display, such as the [CommBox Horizon 105](#) allows you to harness the power of **Microsoft Teams Front Row** layout. This allows for plenty of real-estate for presentations, remote participants, chat and even whiteboarding.

LED

For the most impressive Signature Room in the building, particularly when access is limiting. The [CommBox 21:9 LED](#) is a super-bright LED display enabling clear image of participants and content for any room.



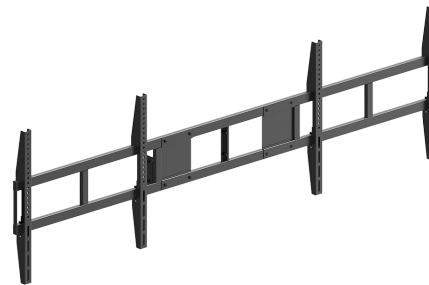
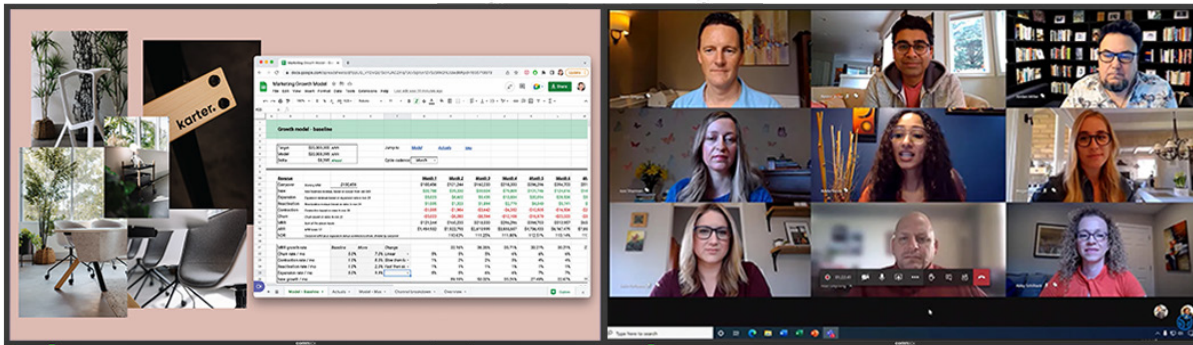


MTR VIDEO CONFERENCE SOLUTION

There are many all-in-one solutions available that incorporate video and audio and clever Ai framing. We like the [Jabra Panacast 50](#), [Lenovo ThinkSmart Core](#) paired with a Touch Pad, which are ideal to bring your Signature Room together. Its wide-angle camera works perfectly with the Karter Signature Table, so all in-person attendees are perfectly framed.



karter. COLLABORATIONS



DUAL DISPLAY SET-UPS

By incorporating two (or more) displays it allows for one display to be used for the presentation and the other for either displaying remote participants or a whiteboarding session. Try the Karter Urban Wall Mount with the Karter Urban Dual Display Bracket which makes install easy and has the added feature of motorised height-adjustability.





SIDE OF HOUSE COLLABORATION

Today's agile meeting trends are to annotate, whiteboard and brainstorm on the fly. By incorporating a mobile stand, such as the Karter Synergy Mobile Stand, and an interactive display, such as the [CommBox Classic S4](#), creativity and collaboration are always close by, particularly if the main large display is non-touch.



Classic S4+





SIGNATURE ROOMS

Where Elegance Meets Technology

karter.com.au