



**BOOST YOUR
DISTANCE
LEARNING WITH
AUTO TRACKING**

AVer **DL30**

Distance Learning Tracking Camera





When distance learning and hybrid classrooms are the new normal, the AVer DL30 is a must-have solution for online education. With the DL30 connected to a laptop, you can present freely onstage while livestreaming so students can learn no matter where they are. Teachers don't need to be camera shy anymore—they can just be themselves and teach how they want thanks to the DL30 tracking camera!



Distance Learning



Hybrid Classroom



Full HD 1080P Resolution



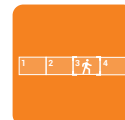
12X Optical Zoom



Human Detection



Presenter Mode



Zone Mode



IP/USB Outputs

Perfect for Online & Offline Education

Simple controls and plug-and-play connectivity are the biggest advantages of the DL30, which is ideal for installing in every classroom. Students tuned in remotely and those present in the classroom can see each other and learn together like they would if they were in the same room. Enhance student engagement and interaction, and easily create distance learning and hybrid learning environments.



12X Optical Zoom

The DL30 is equipped with a 12X optical zoom that operates smoothly without distorting the image. It clearly presents the classroom blackboard panorama and medium, close-up, and long-distance shots of the teacher, providing stable shooting capability while maintaining detailed quality. With the DL30 running the show, teachers no longer need to suppress their creativity in hybrid environments!



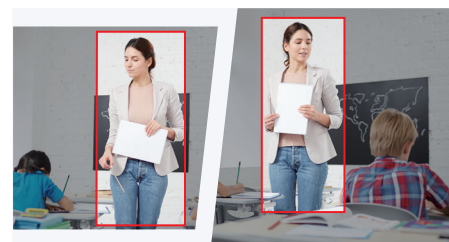
AI-Powered Human Detection

AVer's renowned Human Detection automatically recognizes human forms in the classroom and dynamically tracks specific targets or areas via multiple tracking modes. The target doesn't need to wear any devices or sensors to maintain tracking. Even far-site students can clearly follow the teacher's every move.



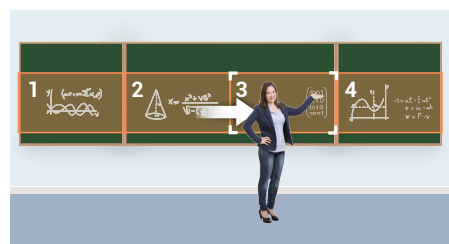
Presenter Mode

Superb tracking and anti-interference functions allow teachers to move freely in the classroom. Instructors can adjust the tracking settings, stream, and record to make their teaching more substantive and vivid. To change the tracking target, users can simply click one button on the remote control.



Zone Mode

Accurate segmented tracking clearly shows content on the blackboard or screen, automatically switching the tracking area according to the teacher's position. Content and the presenter are displayed at the same time so students can understand notes for key points at a glance.



Product Specifications

Camera		General	
Image Sensor	1/2.8" 1080p Low Lux CMOS	Power Requirement	AC 110–220V to DC 12V/2A
Effective Picture Elements	2 Megapixels	Power Consumption	12W
Output Resolutions	1080p/60 (IP Streaming & USB)	PoE	PoE+
Minimum Illumination	0.5 Lux (IRE50, F1.6, 30fps)	Dimensions (W x H x D)	158.8 x 200.0 x 162.2 mm
S/N Ratio	> 50 dB	Net Weight	1.62 (±0.1) kg
Gain	Auto, Manual	Application	Indoor
TV Lines	800 (Center), 600 (Corner)	Tally Lamp	N/A
Shutter Speed	1/4 to 1/10,000 sec (60 Hz) 1/3 to 1/10,000 sec (50 Hz)	Security	Kensington Slot
Exposure Control	Auto, Manual, WDR	Remote Control	Infrared
WDR	Yes	Operating Conditions	Temperature: 0°C to 40°C Humidity: 20% to 80%
White Balance	Auto, Manual	Storage Conditions	Temperature: -20°C to 60°C Humidity: 20% to 95%
Optical Zoom	12X	IP Streaming	
Digital Zoom	2X	Resolution	1080p 60fps
Viewing Angles	DFOV: 84.1° (Wide) to 7.8° (Tele) HFOV: 76.5° (Wide) to 6.8° (Tele) VFOV: 47.3° (Wide) to 3.8° (Tele)	Network Video Compression Formats	H.264, MJPEG (Web Page)
		Network Audio Compression Formats	AAC
Focal Length	f = 3.9 mm (Wide) to 46.8 mm (Tele)	Sample Rates	48, 32, 16, 8 KHz
Aperture (Iris)	F = 1.6 (Wide) to 2.8 (Tele)	Maximum Frame Rate	1080p 60fps
Minimum Working Distance	0.3 m (Wide), 1.5 m (Tele)	Bit-Rate Control Modes	VBR, CBR
Pan/Tilt Angles	Pan: ±170° Tilt: +90°	Bit-Rate Range Setting	512 Kbps to 32 Mbps
Pan/Tilt Speed (Manual)	Pan: 1° to 90°/sec Tilt: 7.85° to 45°/sec	Network Interface	10/100 Base-T
Preset Speed	Pan: 120°/sec Tilt: 110.84°/sec	Multi-Stream Capability	2 (1 for IP Streaming, 1 for Web Page), (1 for USB, 1 for Web Page), 1080p 60fps (max.)
Preset Positions	10 (IR), 256 (IP & USB)		3 (1 for IP Streaming, 1 for Web Page, 1 for USB), 1080p 30fps (max.)
Camera Control - Interfaces	IP, USB	Network Protocols	IPv6, IPv4, TCP, UDP, ARP, ICMP, IGMP, HTTP, DHCP, RTP / RTCP, RTSP, RTMP, VISCA over IP
Camera Control - Protocols	VISCA (IP), CGI (IP), USB	NDI®/HX Capability	N/A
Image Processing	Noise Reduction (2D/3D), Flip, Mirror, WDR	USB	
Power Frequencies	50 Hz, 60 Hz	Connector	USB 3.1 Gen 1 Type-B
AI Auto Tracking Functions		Video Formats	MJPEG, YUY2
Tracking Modes	Presenter Mode, Zone Mode	Maximum Video Resolution	1080p
Audio		USB Video Class (UVC)	UVC 1.1
Channels	2ch Stereo	USB Audio Class (UAC)	UAC 1.0
Codecs	AAC, PCM	Software Tools	
Sample Rates	AAC (48, 32, 16, 8 KHz), PCM (48 KHz)	IP Search and Configuration Tool	Supports Windows® 7 or later
Interface		PTZ Management	Supports Windows® 7 or later
Video Outputs	IP, USB	PTZ Control Panel	Supports iPadOS® 9 or later
Audio Outputs	IP, USB	CaptureShare	Supports Windows® 7 or later, macOS® 10.14 or later
Audio Inputs	MIC in, Line in	Warranty	
Web UI		Camera	3 Years
Live Video Preview	Yes	Accessories	1 Year
Camera PTZ Control	Pan, Tilt, Zoom, Focus, Preset Control	Package Contents	
Camera/Image Adjustment	Exposure, White Balance, Picture	Camera, Remote Control, Power Adapter, Power Cord, USB Cable, Cable Ties (x4), Cable Fixing Plate (x1), M2 x 4mm Screws (x2), 1/4"-20L 7.5mm Screw (x1), Quick Start Guide	
Network Configuration	DHCP, IP Address, Gateway, Subnet Mask, DNS	Optional Accessories	
		Wall Mount Kit (Brackets (x2), M4 x 8mm Screws (x2), 1/4"-20L 7.5mm Screw (x1), Wall Mount Kit Installation Guide), Ceiling Mount Kit (Brackets (x2), M3 x 6mm Screws (x3), 1/4"-20L 7.5mm Screws (x3), Ceiling Mount Kit Installation Guide)	

* Specifications may vary depending on location and are subject to change without notice.

Product Appearance

Front



Back



AVer

©2021 AVer Information Inc. All rights reserved.
All brand names and logos are trademarks of their respective companies.

www.aver.com

CE FC RoHS COMPLIANT

Distributor/Dealer

202103